

# Global Change Fingerprints in Montane Boreal Forests: Implications for Biodiversity and Management of the Northeastern Protected Areas

Principal Investigator: Martin Dovciak, SUNY ESF, 459 Illick Hall, 1 Forestry Drive, Syracuse, NY 13210 [mdovciak@esf.edu](mailto:mdovciak@esf.edu)

Co-Principal Investigator: Colin Beier, SUNY ESF, [cbeier@esf.edu](mailto:cbeier@esf.edu)

Collaborators: Gregory Lawrence, U.S. Geological Survey, NY  
John Battles, University of California, Berkeley

Completion date: 9/30/2015

Climate warming caused substantial upslope movement of tree species climatic envelopes, but it has not yet resulted in synchronous upslope shifts in tree species distributions due to legacy effects of past logging, acid rain, and soil limitations. However, climatic envelopes are expected to keep shifting upslope considerably with ongoing climate warming, warranting the need for continuous (or periodical) monitoring of tree species responses.

Funding support for this project was provided by the Northeastern States Research Cooperative (NSRC), a partnership of Northern Forest states (New Hampshire, Vermont, Maine, and New York), in coordination with the USDA Forest Service.

<http://www.nsrcforest.org>

# Project Summary

Substantial warming of the world's climate in recent decades is likely to affect the ecology of the Northern Forest where mountain forests occur along steep elevational climatic gradients. The overarching goal of the study was to improve biodiversity conservation and protected area management in the Northern Forest by providing information on the character and ecological mechanisms of ongoing changes in the region's mountain forests. We collected vegetation, climatic, and soil data on long-term plots on Whiteface Mtn. and on new plots across the Northern Forest, and we determined that while (a) climate envelopes have shifted substantially upslope, (b) tree species distributions and growth have not yet clearly responded to warming, although they responded to improving precipitation chemistry and exhibited successional dynamics by reinvading areas that were historically logged. However, climate warming is projected to be of sufficient magnitude to cause many mountains in the region to lose climate characteristic of spruce-fir zone by 2100. Red spruce showed continuing recovery with its increasing growth over time and gradual colonization of lower elevations. Adapting forest management and biodiversity conservation to changing environmental conditions and forest composition will pose challenges as tree species showed individualistic responses rather than synchronous upslope migration patterns.

# Background and Justification

Climate in the Northeastern U.S. has warmed by  $0.5^{\circ}\text{F}$  per decade ( $1.3^{\circ}\text{F}/\text{decade}$  in winter) since 1970, and annual temperatures are predicted to increase by another  $3.5\text{-}12.5^{\circ}\text{F}$  by 2100 (Frumhoff *et al.* 2007). Warmer climate can affect growth and survival of forest tree species, and particularly of cold-adapted mesic mountain spruce-fir forests that recently declined near their lower range limits and increased at their upper range limits (Beck *et al.* 2011). Mountain regions contain compressed elevational gradients in climate, and as a consequence, they are especially vulnerable to climate change. Lower range limits of montane spruce-fir forests should be particularly sensitive to climate change (Beckage *et al.* 2008). Rustad (2008) identified the integration of long-term studies with space-for-time studies, and the explicit consideration of ‘tipping points’ (ecosystem thresholds), as major research needs in the study of anthropogenic fingerprints of global climate change in terrestrial ecosystems. We integrated long-term studies on Whiteface Mt., NY, with a broader examination of tree species population structure and growth along elevational gradients in climate in the Northern Forest in order to identify changes occurring in tree species distributions as a result of changing climate and other factors (Fig. 1 a-d).



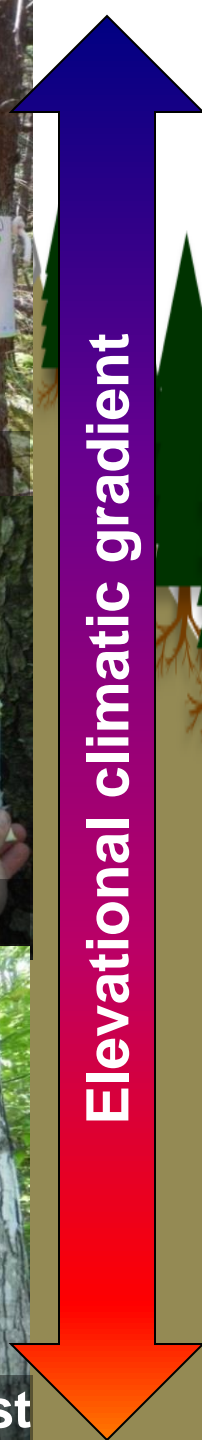
Balsam fir forest



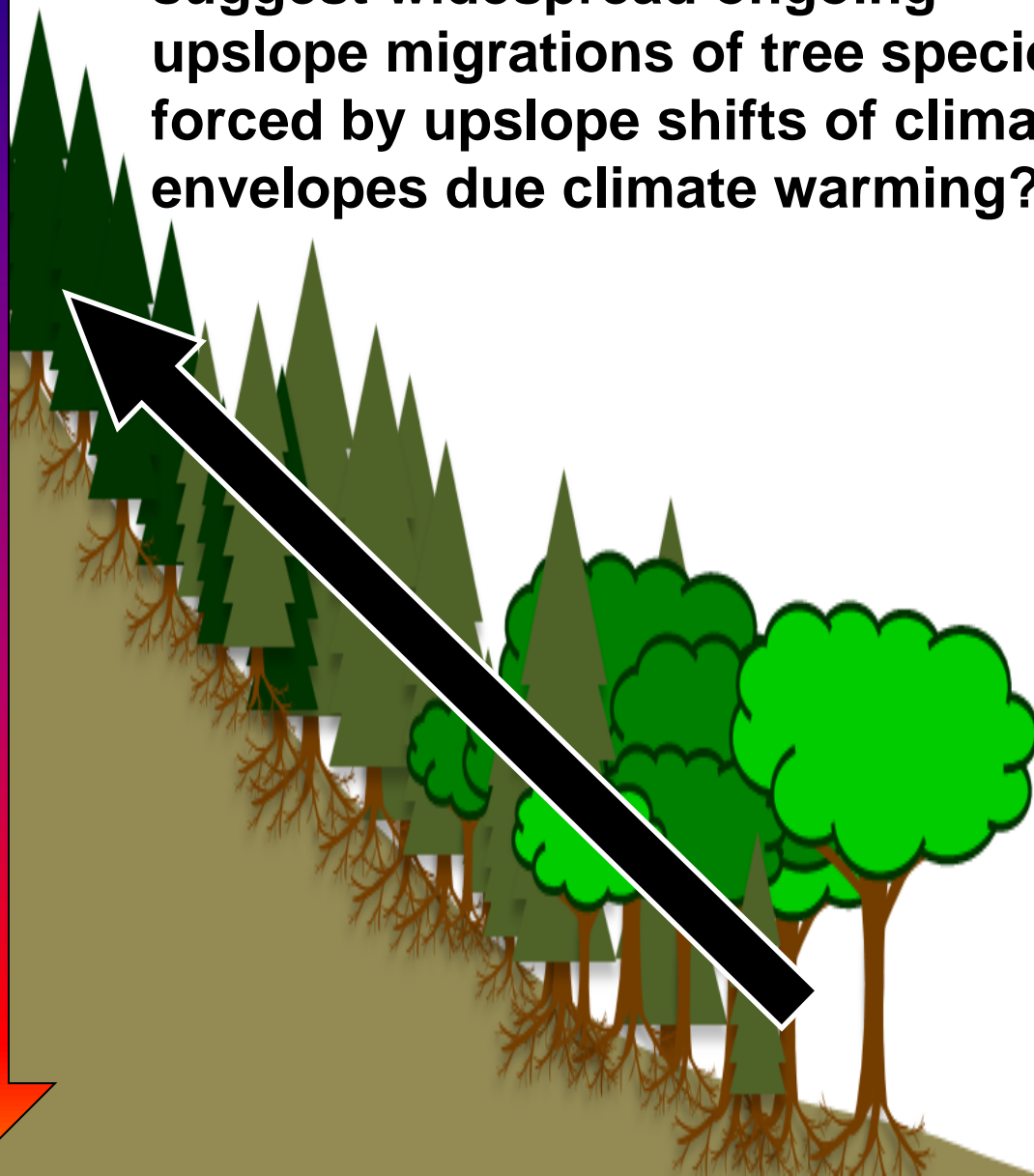
Spruce-fir forest

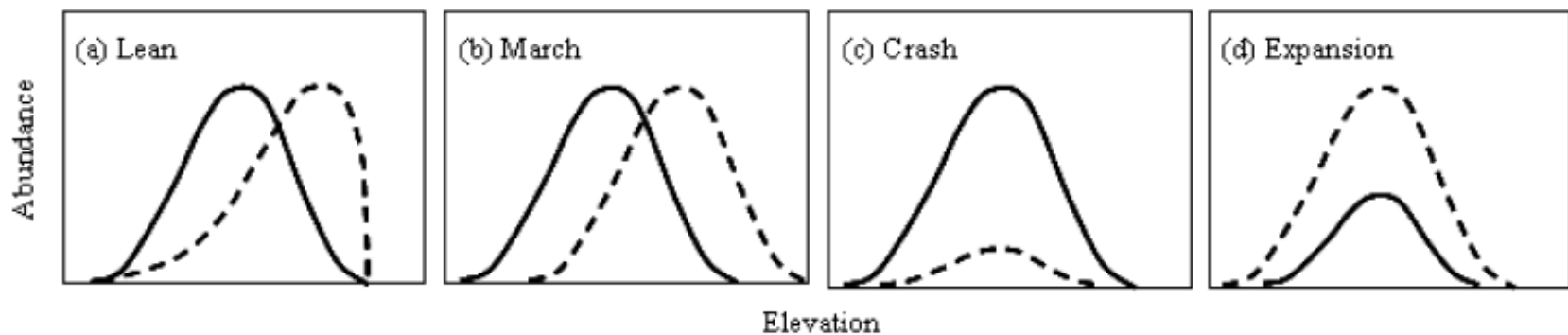


Northern hardwood forest



**Overarching question:**  
Does tree demography & growth suggest widespread ongoing upslope migrations of tree species forced by upslope shifts of climate envelopes due climate warming?



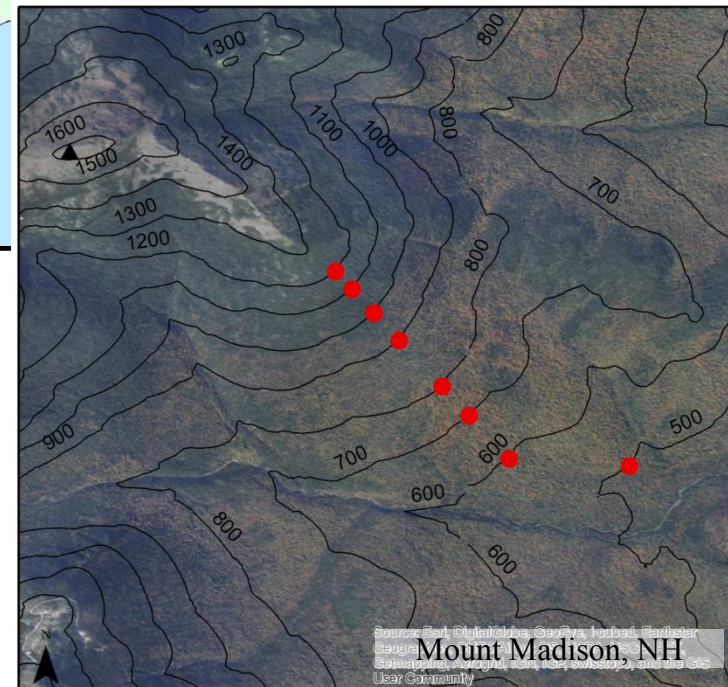
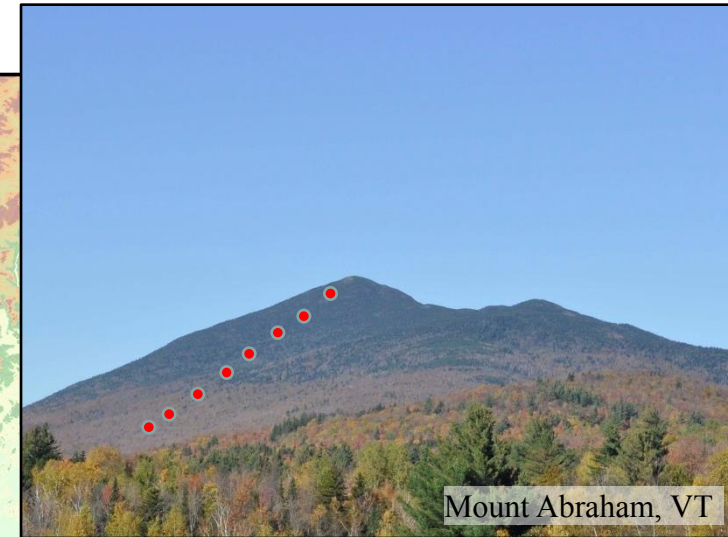
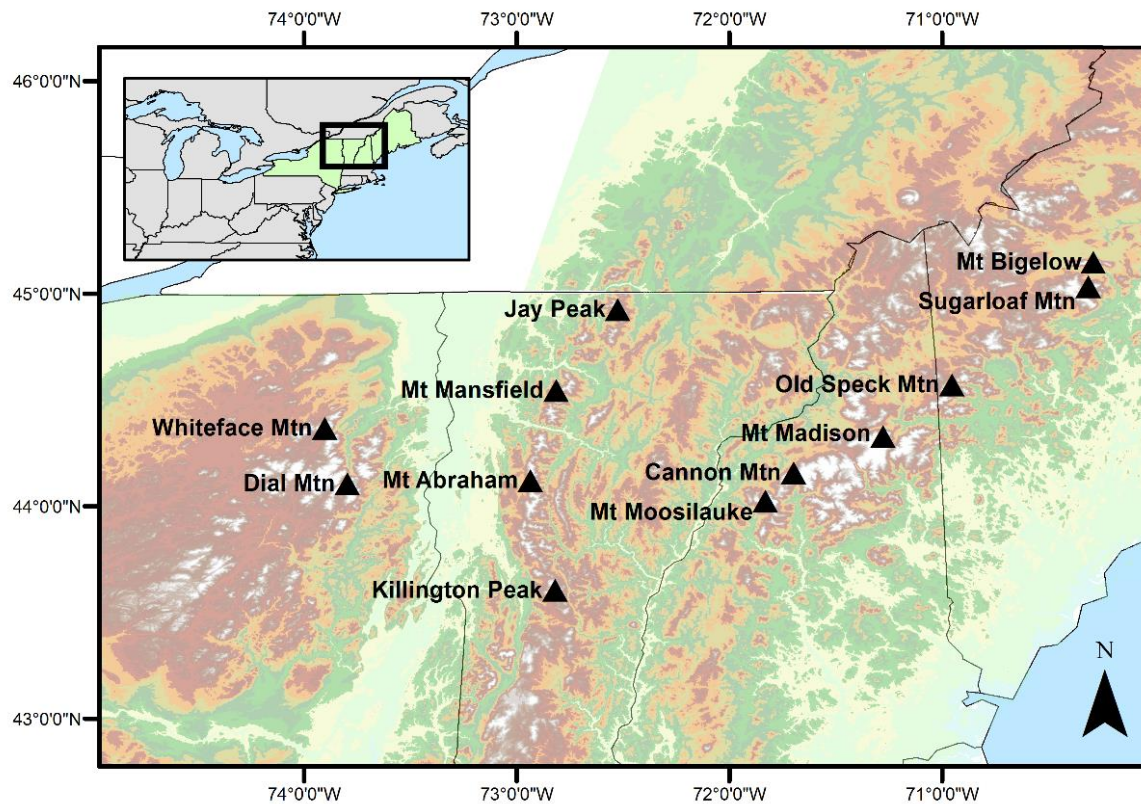


**Fig. 1.** Possible changes in species distribution along an elevational gradient between parental (solid line) and offspring (dashed line) cohorts: (a) Lean--species elevational range does not change but recruitment increases upslope while mortality increases downslope of the previous maximum abundance, (b) March--colonization of space above species upper elevational limit creates “leading edge” while mortality at the lower elevational limit creates “trailing edge” and species gradually shifts upslope, (c) Crash--widespread mortality and recruitment failure across species range may cause its range contraction and even eventual extinction, (d) Expansion--mortality decreases and recruitment increases throughout (and possibly outside) of species range as competing species decline. (a.-c.) adapted from Breshears *et al* (2008).

## Key References:

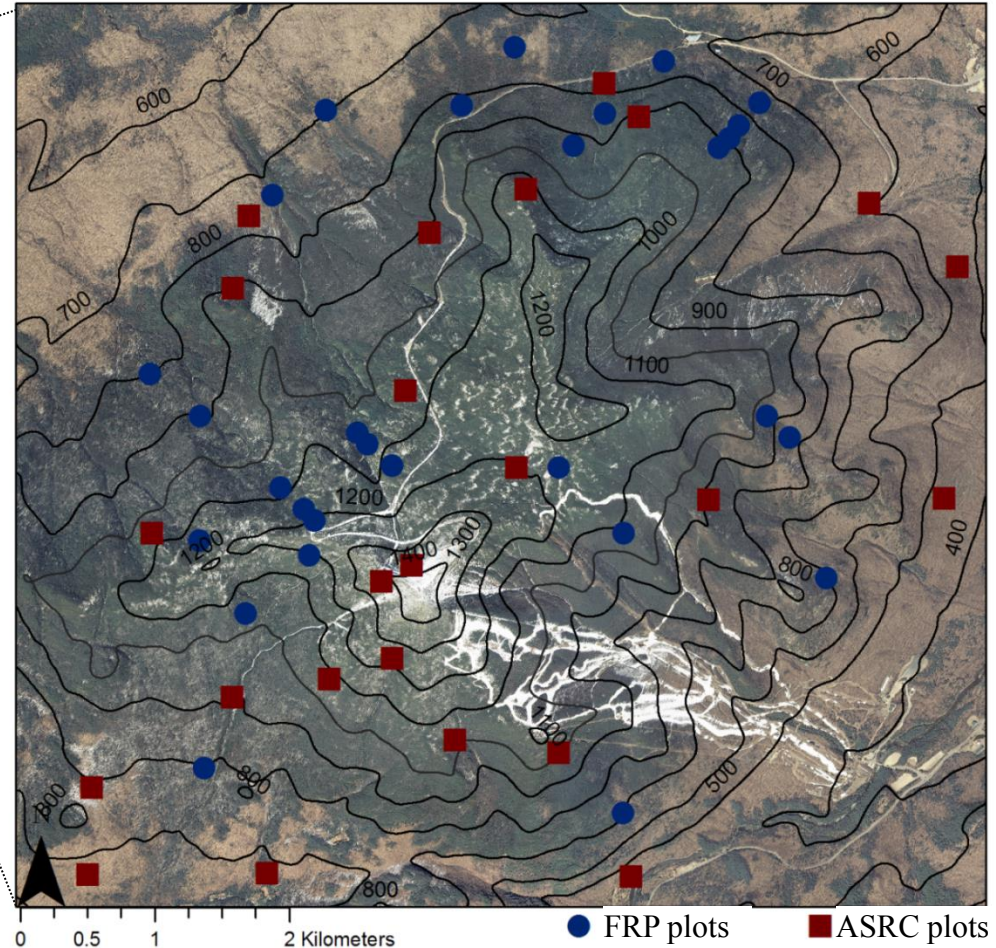
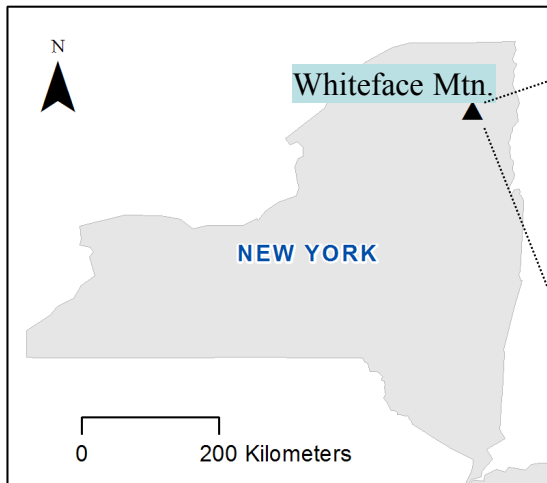
- Beck PSA, Juday GP, Alix C, Barber VA, Winslow SE, Sousa EE, Heiser P, Herriges JD, Goetz SJ. 2011. Changes in forest productivity across Alaska consistent with biome shift. *Ecology Letters*. 14. 373–379.
- Breshears DD, Huxman TE, Adams HD, Zou CB, Davison JE. 2008. Vegetation synchronously leans upslope as climate warms. *PNAS*, 105, 11591–11592.
- Frumhoff PC, McCarthy JJ, Melillo JM, Moser SC, Wuebbles DJ. 2007. Confronting Climate Change in the U.S. Northeast: Science, Impacts, and Solutions. Synthesis report of the Northeast Climate Impacts Assessment (NECIA). Cambridge, MA: Union of Concerned Scientists (UCS).
- Rustad LE. 2008. The response of terrestrial ecosystems to global climate change: Towards an integrated approach. *Science of the Total Environment*, 404, 222–235.

# Methods: Tree demography across Northern Forest (NF)



- ❑ 12 mountains across four states (2-4 per state)
- ❑ 6-8 NF plots at 100 m elevation intervals per mtn. in northern hardwood and spruce-fir forests (~500 to 1,200 m a.s.l.) = 83 plots in total
- ❑ Plots selected to avoid recent forest management

# Methods: Historical tree demography on Whiteface Mtn.



## 47 historical plots resurveyed between 500 m a.s.l. and summit

- ❑ 24 Forest Response Program (FRP) plots from 1986-87 (Battles *et al.* 2003)
- ❑ 23 Atmospheric Sciences Research Center (ASRC) plots from 1964-1966 (Holway *et al.* 1969).
- ❑ 35 microclimate ( $\beta$ Button) stations established and tree cores collected near FRP plots

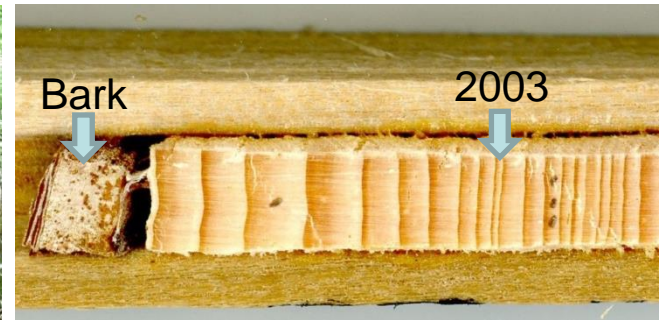
Battles JJ, Fahey TJ, Siccama TG, Johnson AH (2003) Community and population dynamics of spruce-fir forests on Whiteface Mountain, New York: recent trends, 1985-2000. *Canadian Journal of Forest Research* 33, 54-63.

Holway JG, Scott JT, Nicholson S (1969) Vegetation of the Whiteface Mountain region of the Adirondacks. *Atmospheric Sciences Research Center Report* 92, 1-49.

# Methods: Field measurements-trees, soils, microclimate



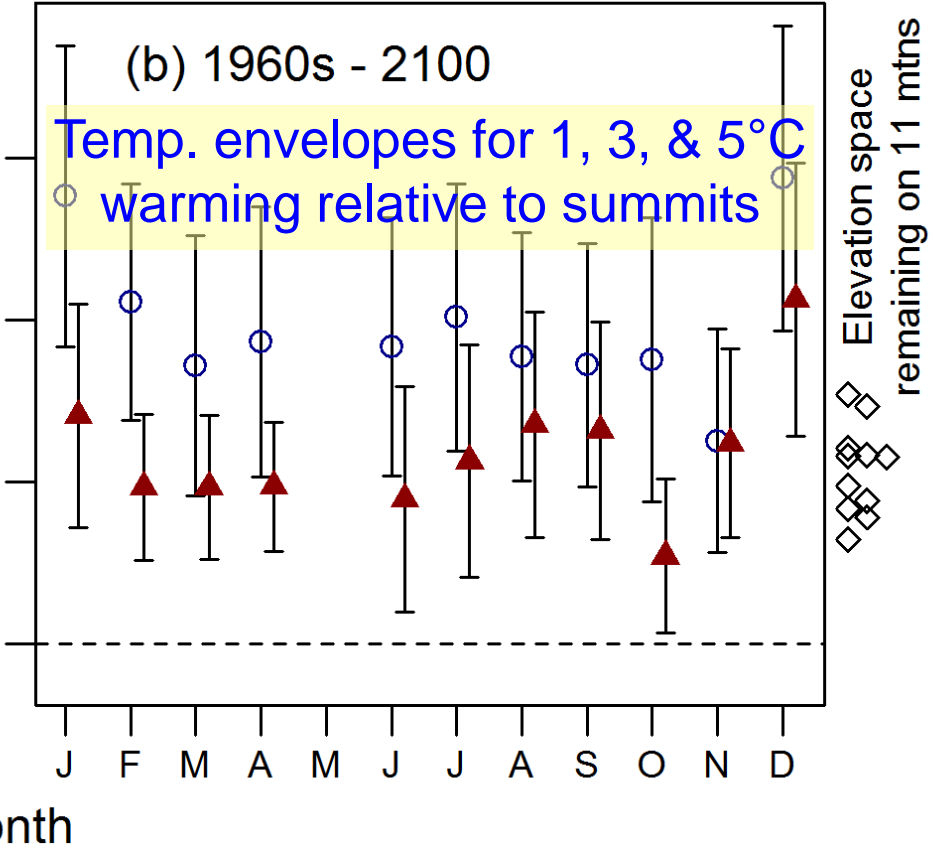
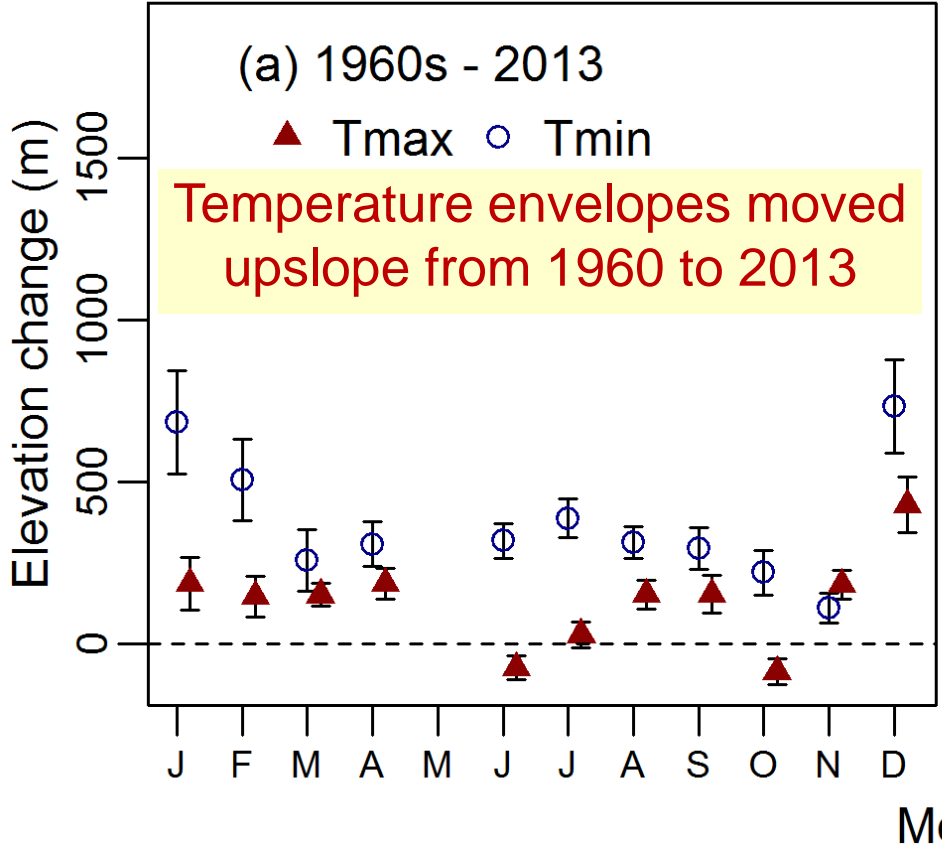
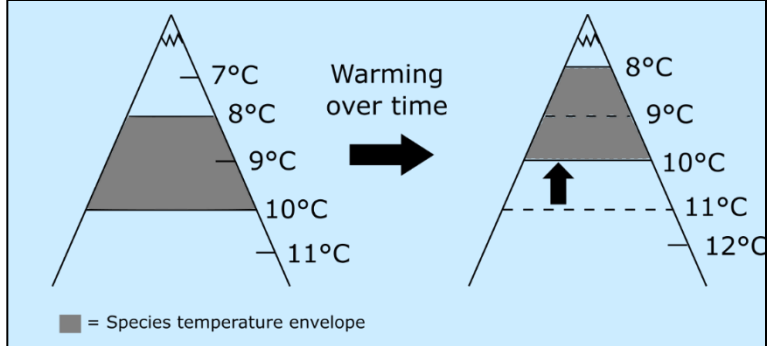
- ❑ NF & ASRC plots = 225 m long transects with 15 sampling points
- ❑ FRP plots = 20 × 20 m plots
- ❑ Tree demography measured at sampling points on NF & ASRC plots w/point centered quarter method; all trees measured on FRP plots (DBH > 2.5 cm)
- ❑ One iButton microclimate station per plot measured temperature & humidity at 2-hourly intervals for nearly 1 year
- ❑ Soil depth measured with a soil probe
- ❑ Tree cores (2) extracted from dominant or co-dominant spruce and fir (up to 3 trees per plot and species)





# Results: Changing spruce-fir climate envelopes over time

Temperature envelopes may move above the current summits by 2100

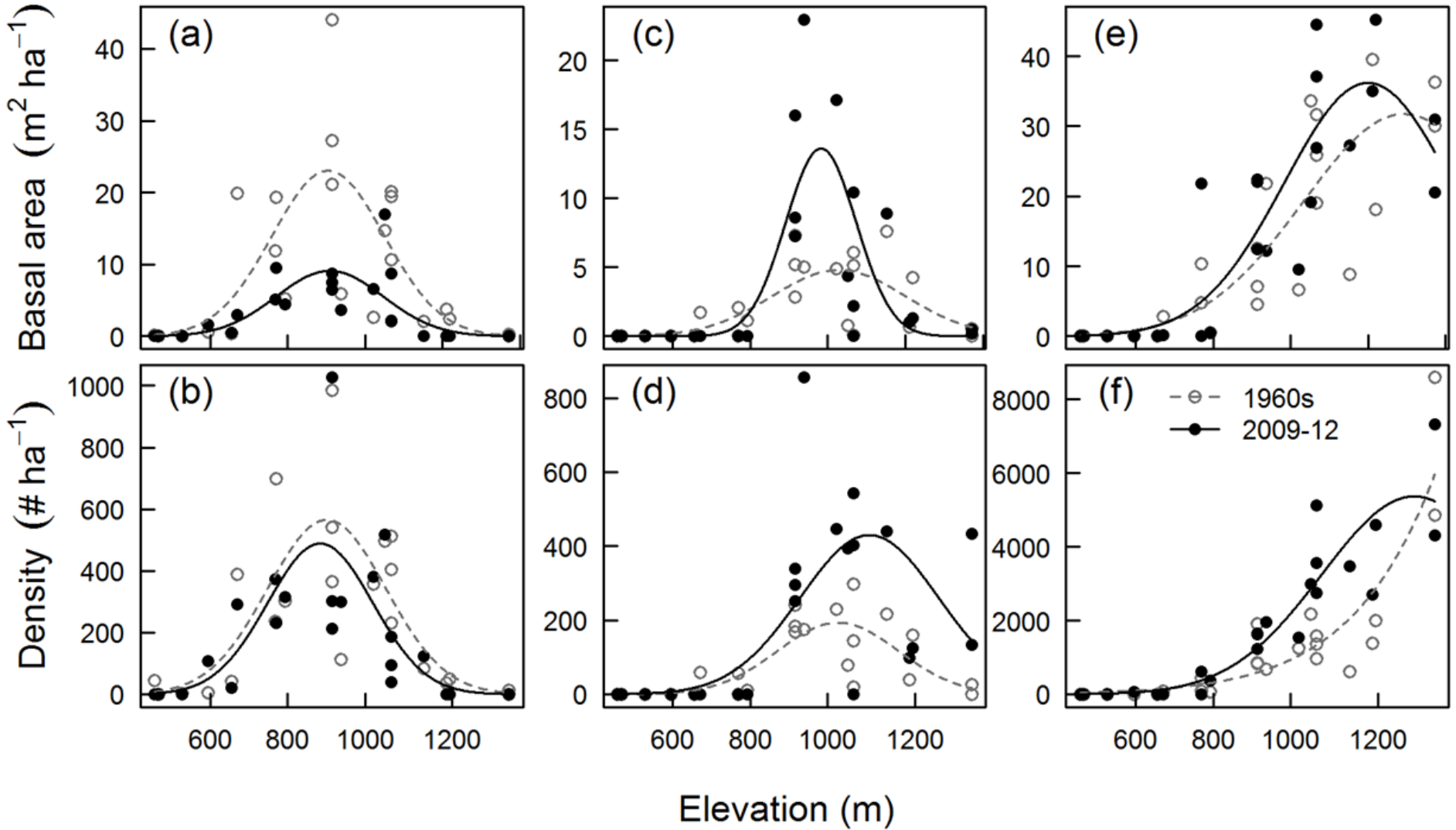


# Results: Individualistic rather than synchronous changes in species elevational distributions on Whiteface Mtn.

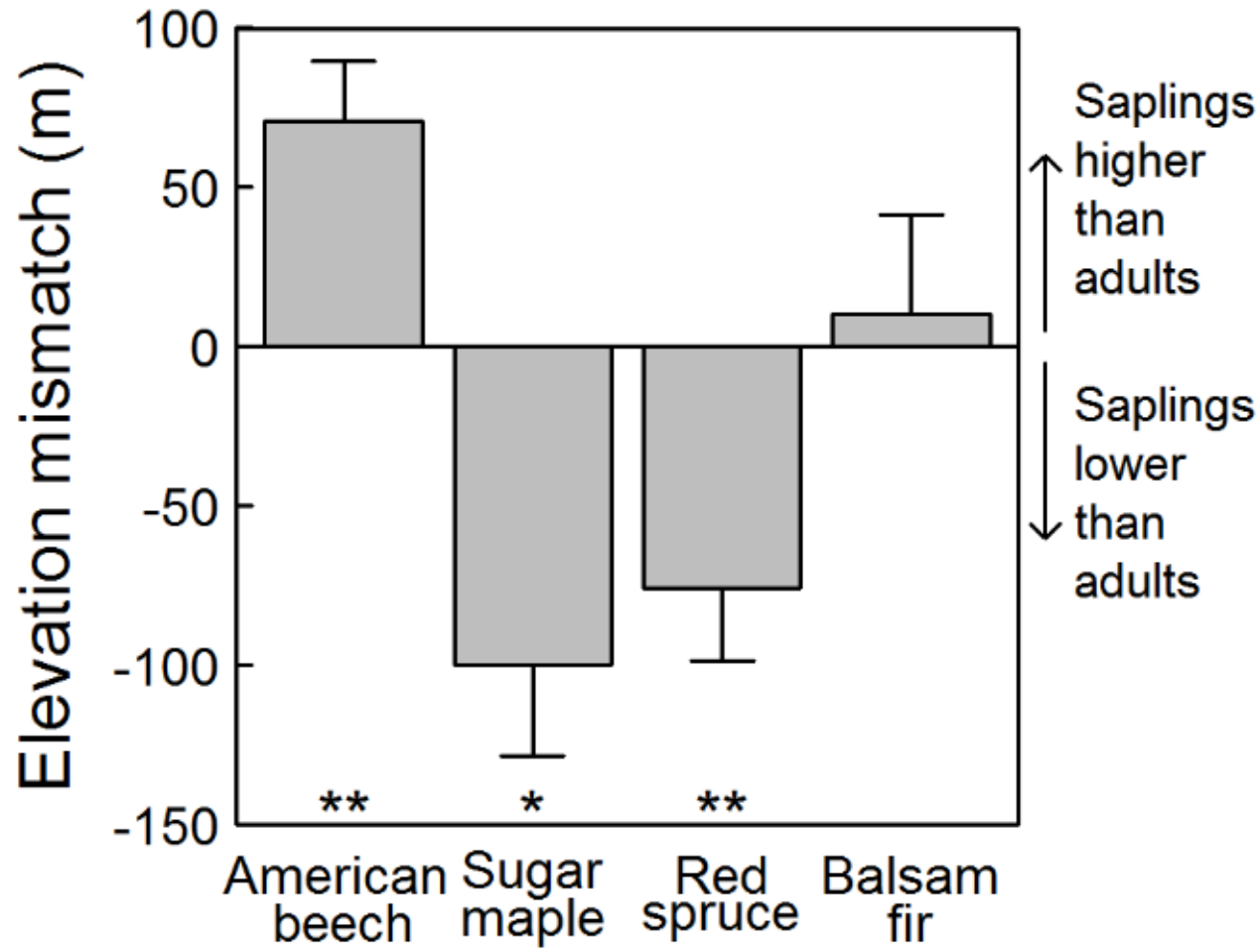
Red spruce

Cordate birch

Balsam fir

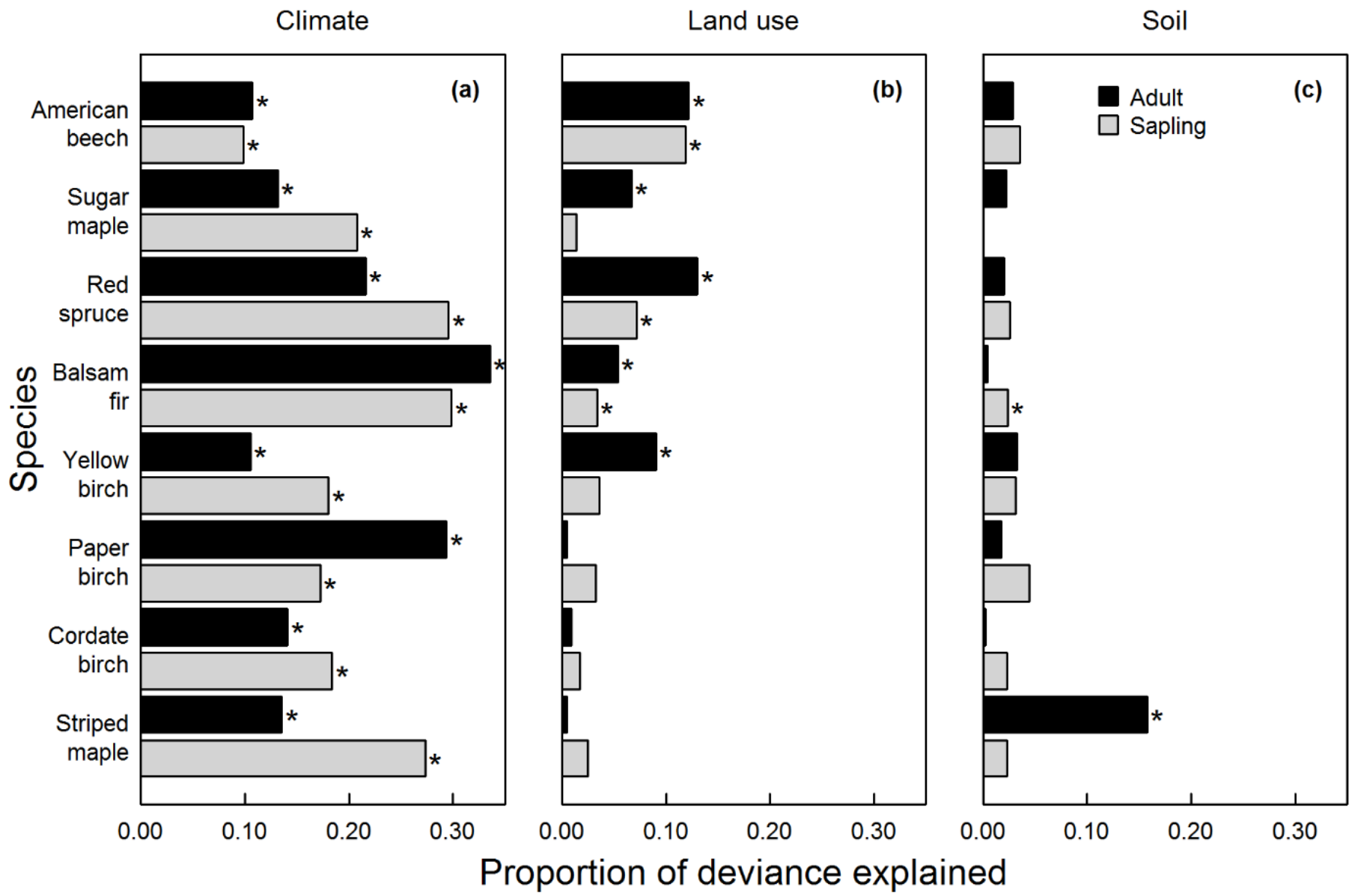


# Results: Varied distributions of saplings relative to adult populations of tree species across Northern Forest



# Results:

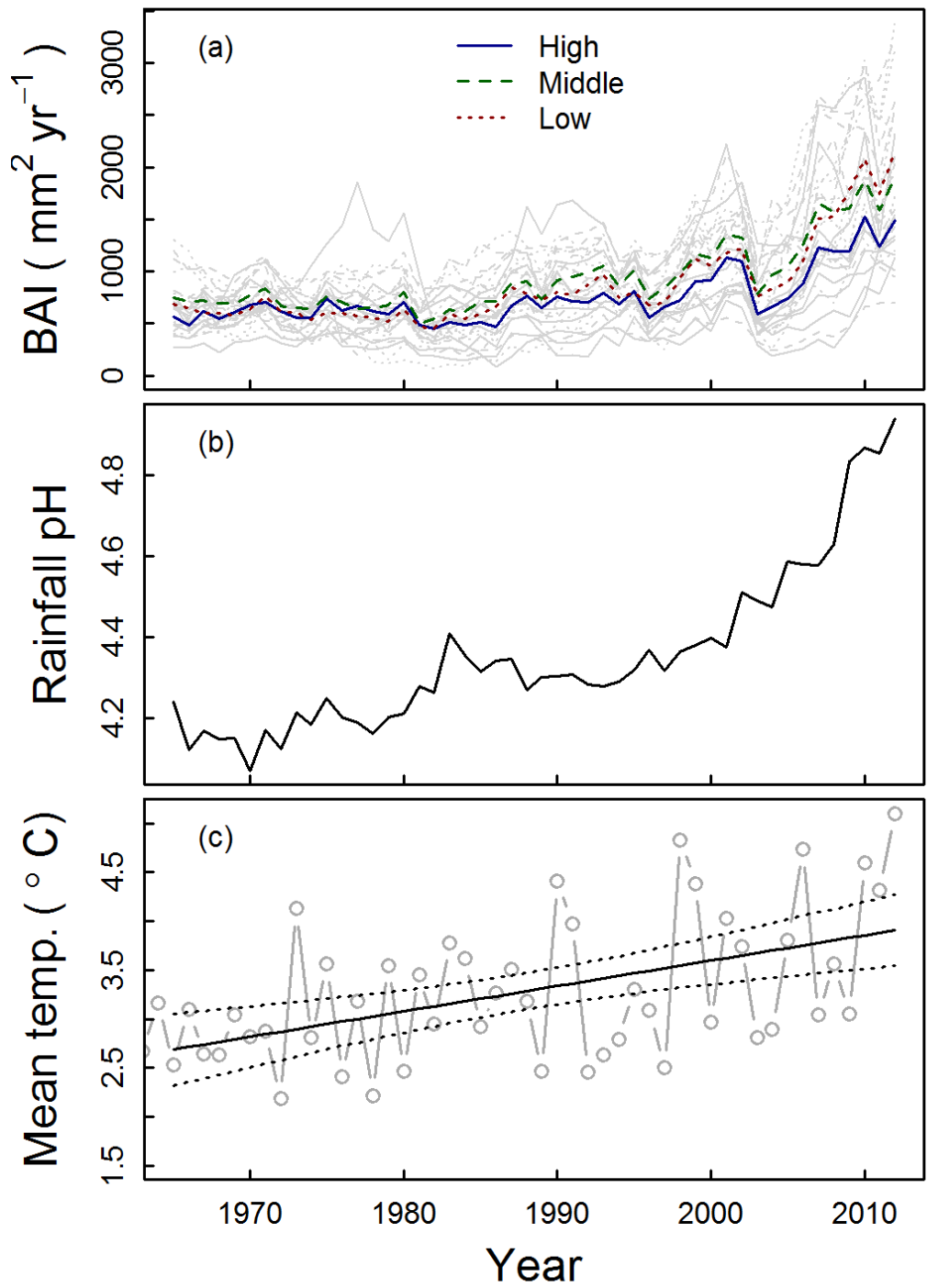
## Tree species distributions shaped mainly by climate, but also by land-use history and soils



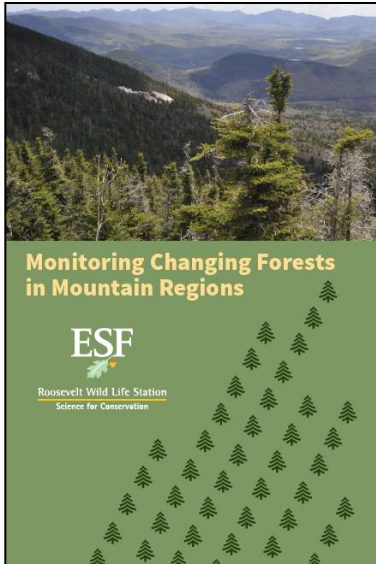
# Results:



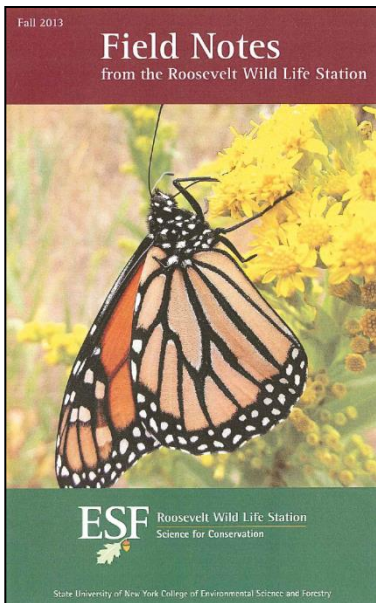
**Red spruce growth increased over time across elevations and mountains as a function of increasing temperature and rainfall pH (acid rain decline)**



# Outreach & Education



- ❑ An outreach pamphlet and a news piece on Monitoring Changing Forests in northeastern United States were produced by SUNY ESF Office of Communications (left, distributed at a couple of major conferences and regionally, reaching >150 people)
- ❑ Photos and some of the results were included in a SUNY ESF course *Plant Ecology & Global Change* annually taught to ~ 30-50 undergraduate and graduate students



- ❑ 12 presentations (5 invited) were given on the project findings cumulatively to >300 people, including:
  - Forest managers and researchers
  - Botanists (professional and lay)
  - General public
  - Undergraduate students in biology/environmental science
  - Researchers in ecology and natural resource management
- ❑ A list of presentations is provided in the List of Products

# Implications and applications in the Northern Forest region

- ❑ Climate warming that occurred in the region, and that will occur by 2100, had and will continue having dramatic effects on upslope movement of tree species climatic envelopes. Many mountains are likely to lose climate characteristic of spruce-fir zone by 2100.
- ❑ Yet, the effects of climate on changes in tree demography, species distributions over time and tree growth appear to be masked so far by other environmental factors such as land-use history (logging) and changing precipitation chemistry (decline in acid rain).
- ❑ Red spruce shows continuing recovery as a foundational species with its increasing growth over time and gradual colonization of lower elevations where canopy trees were removed in the past by logging (at times combined with mortality caused by acid rain).
- ❑ Adapting forest management and biodiversity conservation to gradually changing environmental conditions and forest composition will pose challenges as tree species show individualistic responses rather than synchronous upslope migration patterns.

# Future directions

- ❑ We established an extensive monitoring network and baseline data for tracking tree species migrations along elevational climatic gradients forced by changing climate or successional dynamics in forests of post-logging origin.
- ❑ To improve our current understanding of tree growth and population responses along elevational gradients it would be useful to complement this monitoring network
  - (a) monitoring of precipitation quantity and chemistry
  - (b) characterizing soil chemistry in greater detail
  - (c) adding permanent monitoring stations at selected elevational gradients across the region
- ❑ To increase our understanding of whole ecosystem dynamics across elevational gradients monitoring of other groups of organisms should be added, including understory herbs and fauna particularly sensitive changes in both climate and vegetation (e.g., ants).



# List of products

## Peer-reviewed publication:

- Frelich, L.E., R.O. Peterson, M. Dovciak, P.B. Reich, J.A. Vucetich, N. Eisenhauer (2012). Trophic cascades, invasive species, and body-size hierarchies interactively modulate climate change responses of ecotonal temperate-boreal forest. *Philosophical Transactions of the Royal Society B* 367, 2955-2961.

## Peer-reviewed publications in preparation:

- Wason, J., M. Dovciak, C.M. Beier, J.J. Battles. Range shifts lag tree growth responses to reduced acid rain and climate warming. To be submitted in Spring 2016.
- Wason, J. and M. Dovciak. Tree demography across northeastern U.S. mountain forests suggests multiple directions and environmental drivers of species range shifts. To be submitted in Spring 2016.
- Wason, J., M. Dovciak, E. Bevilacqua. Climates on the move: Implications for past and future species range shifts in northeastern US mountain forests. To be submitted in Spring 2016.

## Doctoral dissertation:

- Wason, J. (in preparation) Environmental controls on forest tree species growth and distributions along elevation gradients in the northeastern United States. Dissertation, SUNY ESF, Syracuse, NY. Defense planned in May 2016.

## Undergraduate research report:

- Busman, A. (2013). Forest dynamics and growth-rates of red spruce along elevation gradients on Whiteface Mountain relative to regional climate change. Final Report for NSF UMEB Program at SUNY ESF, Syracuse, NY, 10 pp.

# List of products (cont.)

## **Outreach Pamphlets:**

- Monitoring Changing Forests in Mountain Regions. SUNY ESF, Roosevelt Wild Life Station, Syracuse, NY, 4 pp. Fall 2015.
- Monitoring our Changing Forests. Field Notes from the Roosevelt Wild Life Station. Fall 2013.

## **Presentations:**

- Dovciak, M. (2015). Monitoring changing forests in mountain regions. Mountain Research Initiative Mixer, American Geophysical Union Fall Meeting, San Francisco, December 14-18 (invited).
- Wason, J, M. Dovciak, E. Bevilacqua (2015). Mountain climates on the move: Implications for past and future vegetation shifts in the northeastern United States. American Geophysical Union Fall Meeting, San Francisco, December 14-18.
- Wason, J. and M. Dovciak (2015). Demographic responses of tree communities relative to recent environmental change in northeastern mountain forests. Ecological Society of America, Annual Meeting, Baltimore, MD, Aug. 9-14.
- Dovciak, M. (2015). Understanding, conserving, and managing forest ecosystems and forest edges in fragmented human-dominated landscapes. University of Connecticut, Storrs, May 19 (invited).
- Wason J. (2015). The deliberation of the Ents: Tree community response lags recent environmental change in northeastern mountain forests. Utica College, March (invited).

# List of products (cont.)

## **Presentations (continued):**

- Wason J. (2015). A walk in the woods: Plant communities of northeastern mountain forests. Syracuse Botanical Club, March (invited).
- Dovciak, M. (2015). Global change fingerprints in mountain spruce-fir forests: Implications for biodiversity and management of the northeastern protected areas. Adirondack Research Forum, Old Forge, New York, March 12.
- Wason, J., M. Dovciak (2015). Evidence of elevational shifts in northeastern U.S. forest tree populations. New York Society of American Foresters Annual Meeting. Syracuse, NY, Jan. 22.
- Wason, J. and M. Dovciak (2015). Elevational distributions of tree species: Climate, land management history, or soils? New York Society of American Foresters Annual Meeting. Syracuse, NY, Jan. 22.
- Wason, J., M. Dovciak, C.M. Beier, J.J. Battles (2014). Responses of tree populations to recent climatic trends in northeastern mountain forests: Thinking beyond range margins. Ecological Society of America, Annual Meeting, Sacramento, CA. Aug. 10-15.
- Dovciak, M. (2013). Linking plant population and community ecology under global change: Implications for conservation and ecosystem management. University of Massachusetts, Amherst, April 22 (invited).
- Busman, A., J.W. Wason III, M. Dovciak (2013). Recent convergence of red spruce (*Picea rubens*) growth rates at high and low elevations on Whiteface Mtn. Adirondack Research Consortium 20<sup>th</sup> Annual Conference, May 15-16, 2013, Lake Placid, NY.